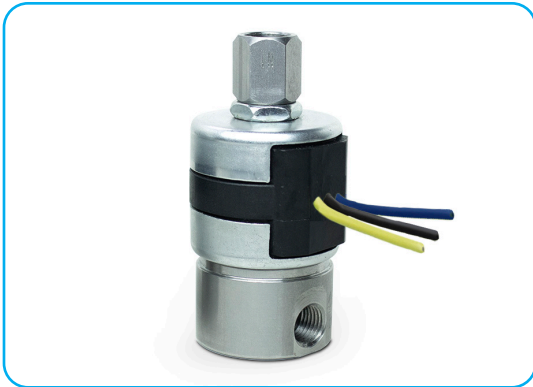


MAGNET LATCHING VALVES - 3 WIRE



Series MLV20 >> Model 23

3-Way Normally Closed 3-Wire Magnet Latching Valve – Exhaust to Atmosphere

This type of valve is often used in remote areas where continuous power may not be available or with battery-powered portable equipment where power capacity is limited. It is also valuable in equipment where coil heating, due to continuous application of power, is undesirable. Air, water and other fluids are compatible with standard Buna seals. Hot water, steam, gasoline, oils, some hydraulic fluids, and many other media require other seal materials.

- Meets today's demand for economy of space.
- Uses power only during latching and un-latching.
- Great for fluid power applications.

OPERATING CONDITIONS

Media: Air, water, and other fluids are compatible with standard Buna seals. Hot water, steam, gasoline, and many oils require other seal materials. (Series 20 pressure ratings may change due to the viscosity of the liquid.)*

Valve Temperature Range: Standard Valves - 0°F (-18°C) to 104°F (40°C) ambient; 0°F (-18°C) to 150°F (65°C) media.

Maximum Operating Pressure Differentials: See table on next page.

Burst Pressure: 5,000 PSI

Leakage: Bubble tight for standard valves.

Vacuum: To 5 Microns*

ELECTRICAL CHARACTERISTICS

Coil Voltage: 6, 9, 12, 24 VDC

Nominal Power: 8.0 Watts

Coil Construction: Molded Class B with three - 24" leadwires

Typical Response Time on Air: Approximate 50 millisecond pulse to energize and de-energize.

Operating Speed: Up to 600 CPM

MECHANICAL CHARACTERISTICS

Body: Stainless Steel

Internal Components: Stainless Steel

Elastomers: Nitrile (Buna) standard. FKM, EPDM, Neoprene and Low Temp Nitrile (Buna) are available.*

Orifice Diameter: See table on next page.

Porting: 1/8" OR 1/4" NPT

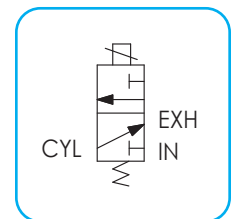
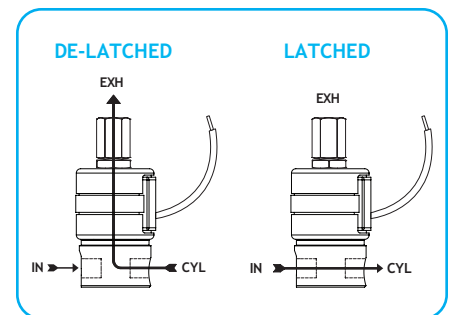
Life Expectancy: Millions of cycles, depending on application, lubrication, etc.

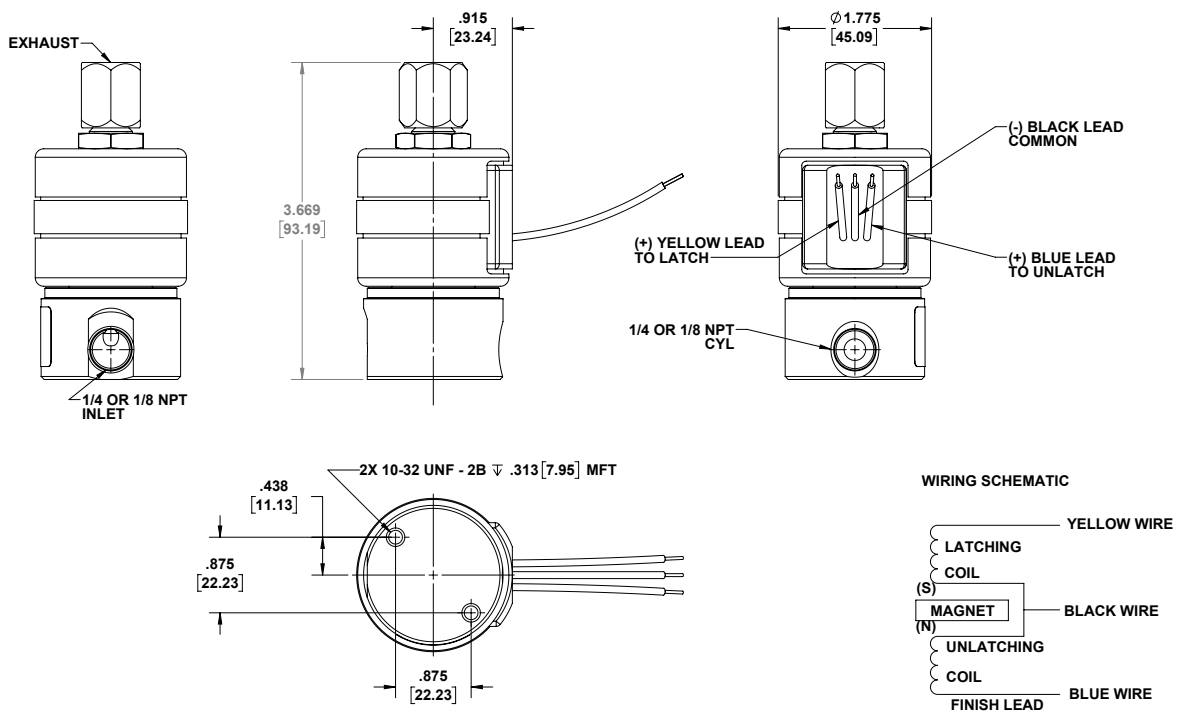
Valve Weight: 1.2 lb average

Repair Packs: See table on next page.

Options: Alternate body materials, voltages, elastomers available.*

* Consult representative or factory for options and specifications.





SERIES MLV20 MODEL 23
3WNC
MAGNETIC LATCHING COIL
WITH 3 LEADWIRES

VALVE SPECIFICATIONS

MAX. OPER. PRESS. DIFF.	ORIFICE SIZE		CV FACTOR		3 WIRE LEADWIRE VALVE NUMBER	
	DC	N.C.	N.O.	N.C.	N.O.	1/8 NPT PORTS
385	1/32	1/32	.024	.024	23GG7X3LM-Δ	23GG9Z3LM-Δ
150	3/64	1/16	.052	.095	23HJ7X3LM-Δ	23HJ9Z3LM-Δ
100	1/16	1/16	.095	.095	23JJ7X3LM-Δ	23JJ9Z3LM-Δ
100	1/16	3/32	.095	.156	23JK7X3LM-Δ	23JK9Z3LM-Δ
65	3/32	3/32	.156	.156	23KK7X3LM-Δ	23KK9Z3LM-Δ
40	1/8	3/32	.214	.156	23NK7X3LM-Δ	23NK9Z3LM-Δ
20	3/16	3/32	.500	.156	23PK7X3LM-Δ	23PK9Z3LM-Δ

ORDERING INFORMATION:

Δ - SEAL MATERIAL CODE - REPLACE Δ WITH DESIRED CODE:

Blank = Nitrile (Buna)

-N = FKM

-A = EPDM

-S = LOW TEMP BUNA

-E = NEOPRENE

WHEN ORDERING VALVES OR REPAIR PACKS ADD VOLTAGE AND FREQUENCY TO COMPLETE VALVE NUMBER. EXAMPLES: VALVE (23JJ7D3LM-12/DC) REPAIR PACK (K23JJDL-DC)