



## Series 20 >> Model H23

### High Pressure – 3-Way Normally Closed

PeterPaul's model H23 has a dual operator valve that allows the same media control as a three way normally closed valve but at much higher pressure ratings than previously available. To function as a 3-way normally closed valve, operators must be alternately energized and de-energized. Pressure applied to the "IN" port must always be equal to or greater than the pressure in "CYL" port. For use on air and other non-corrosive gases, water and oil.

- Precision stainless free floating plunger.
- Kel-F pin sealing element.
- Orifice guides the sealing pin for near perfect alignment.

## OPERATING CONDITIONS

**Media:** Air and other non-corrosive gases, water and oil.

**Filtration:** Down to 60 microns or less is recommended.

**Valve Temperature Range:** Standard Valves - 0°F (-18°C) to 104°F (40°C) ambient; 0°F (-18°C) to 150°F (65°C) media. Optional Valves - can tolerate much higher or much lower ambient and media temperatures.\*

**Maximum Operating Pressure Differentials:** See table on preceeding page.

**Burst Pressure:** 10,000 PSI

**Leakage:** Bubble tight (with polymer sealing pins)

## ELECTRICAL CHARACTERISTICS

**Coil Voltage:** 6 to 825 VAC 60 HZ. and 5 to 720 VAC 50 HZ.— 1.8 to 265 VDC

**Nominal Power:** AC – 7.3 Watts, DC – 9.5 Watts (Per Operator)

**Coil Construction:** Non-Molded Class A (Std.), Molded and Potted Class F or Class H (Opt.)

**Typical Response Time on Air:** 4 - 16 Milliseconds

**Operating Speed:** Up to 600 CPM with gas media

**Duty Cycle:** Continuous

## MECHANICAL CHARACTERISTICS

**Body:** 300 Series Stainless Steel

**Internal Components:** Stainless Steel. Copper - AC Only.

**Elastomers:** Nitrile (Buna) (Std.). Many other elastomers available.\*

**Sealing Pin:** Kel-F (Std.), Delrin®, Teflon®, Nylon, PEEK, Radel®, Ultem®, 303 Stainless Steel (Opt.)

**Orifice Diameter:** See table on preceeding page.

**Porting:** 1/4" NPT

**Housing:** Grommet with 1/2" NPT conduit (many options available).

**Mounting:** Must be mounted within 30° of vertical.

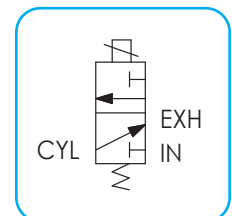
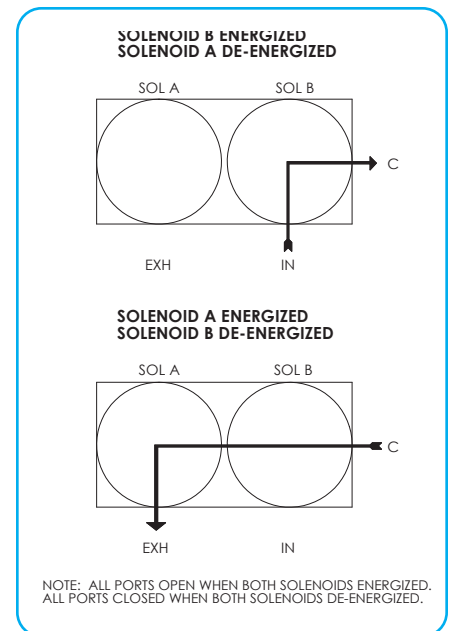
**Life Expectancy:** Millions of cycles, depending on application, lubrication, etc.

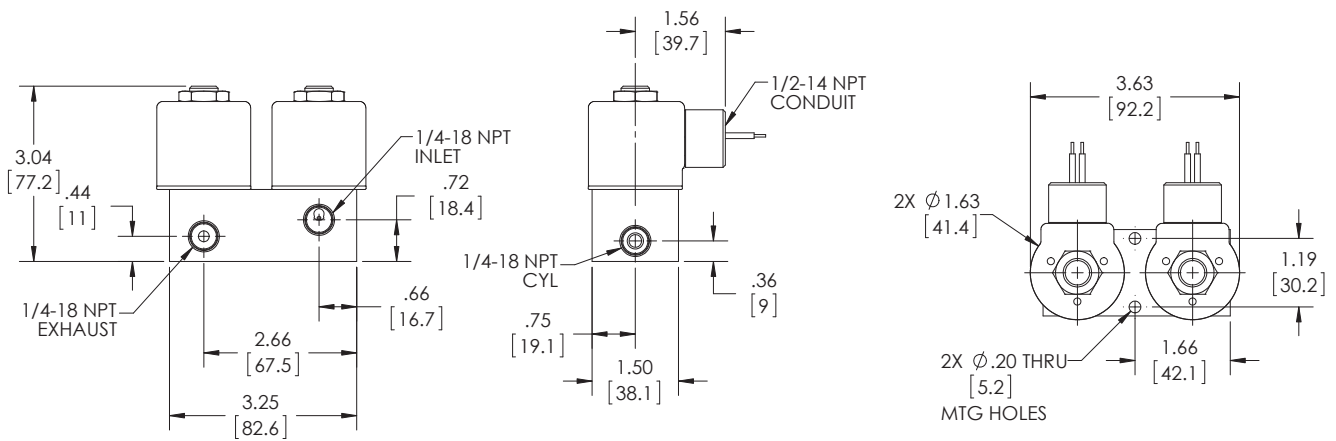
**Valve Weight:** 3.63 lbs

**Repair Packs:** See table on preceeding page.

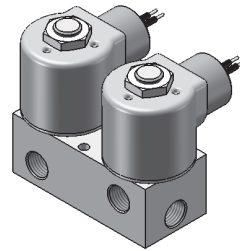
**Options:** Alternate Sealing Pin Materials and Alternate Elastomers\*

\* Consult representative or factory for options and specifications.





**SERIES 20  
MODEL H23  
3WNC  
HIGH PRESSURE**



## VALVE SPECIFICATIONS

GAS PRESSURE RATINGS		ORIFICE SIZE	CV FACTOR	VALVE NUMBER
AC	DC			
3000*	3000*	1/32	.022	H23GG19DCV
2500*	1500*	3/64	.041	H23HH19DCVG
1750*	500	1/16	.065	H23JJ19DCVG
650*	100	3/32	.100	H23KK19DCVG

LIQUID PRESSURE RATINGS		ORIFICE SIZE	CV FACTOR	VALVE NUMBER
AC	DC			
3000*	3000*	1/32	.022	EH23GG19DCV
1500*	1500*	3/64	.041	EH23HH19DCVL
1000*	500	1/16	.065	EH23JJ19DCVL
300	100	3/32	.100	EH23KK19DCVL

\* FKM seals not recommended for pressure above 500 psi.

## ORDERING INFORMATION:

WHEN ORDERING VALVES OR REPAIR PACKS ADD VOLTAGE AND FREQUENCY TO COMPLETE VALVE NUMBER. EXAMPLES: VALVE (H23JJ19DCV 120/60) REPAIR PACK (KH23JJ AC)